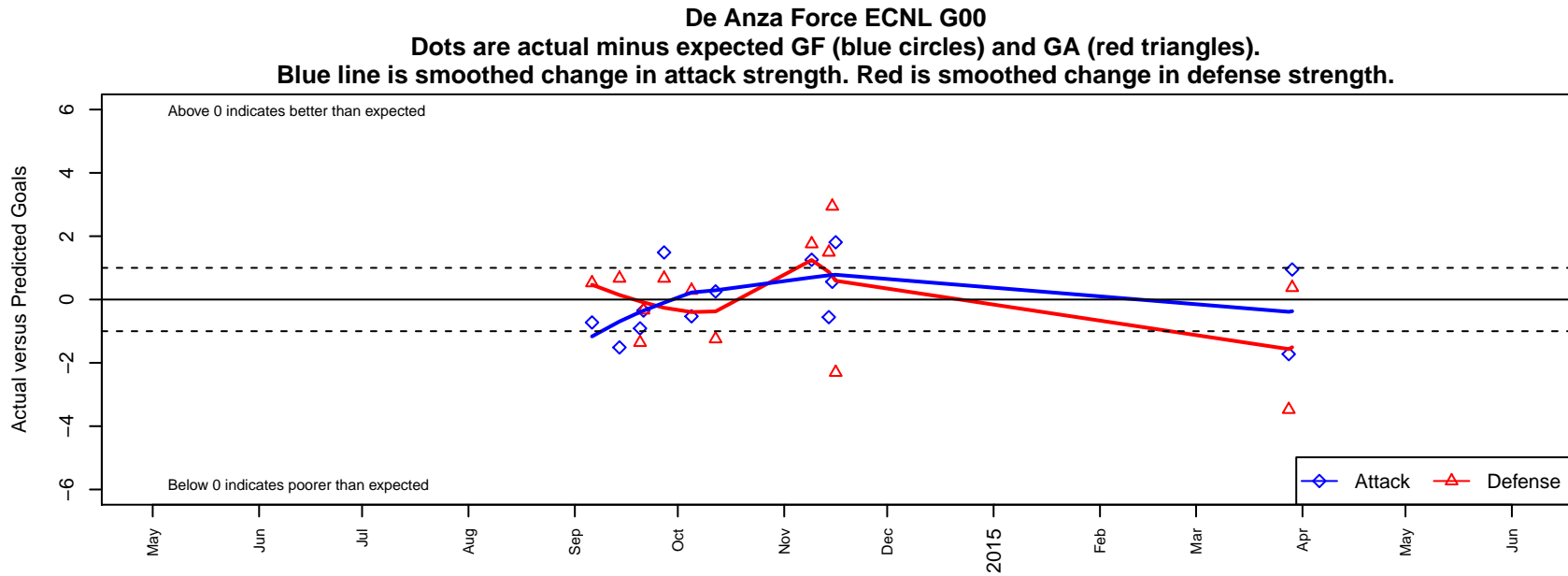


De Anza Force ECNL G00

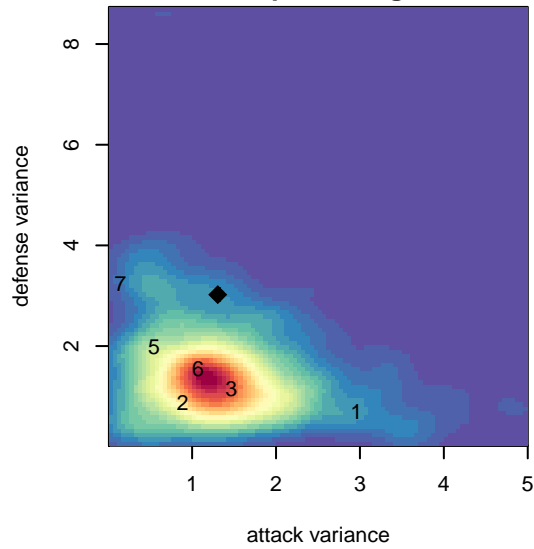
, CA
G00 total strength=1608
attack=24.76 defense=10.95

alt names used:
De Anza Force ECNL U14

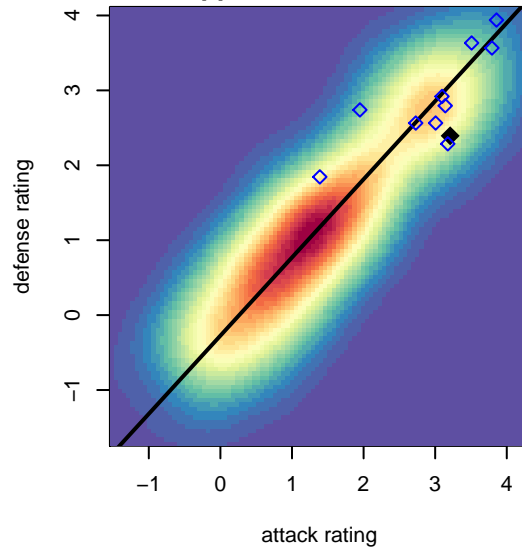
Venues played:
2014 ECNL U14



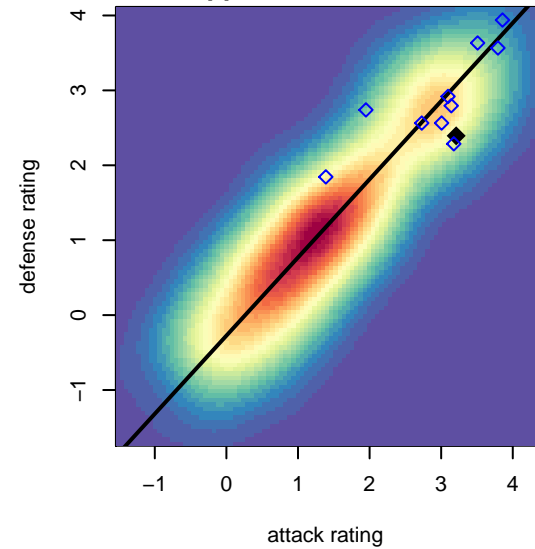
**attack and defense variance (black dot)
relative to other teams
and top 10 in region**



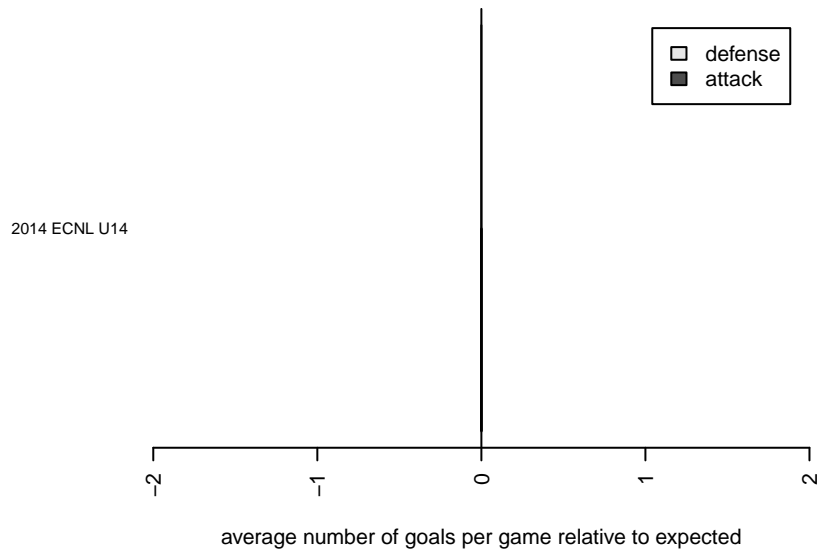
**attack and defense rating
relative to others at age
and all opponents in last 13 months**



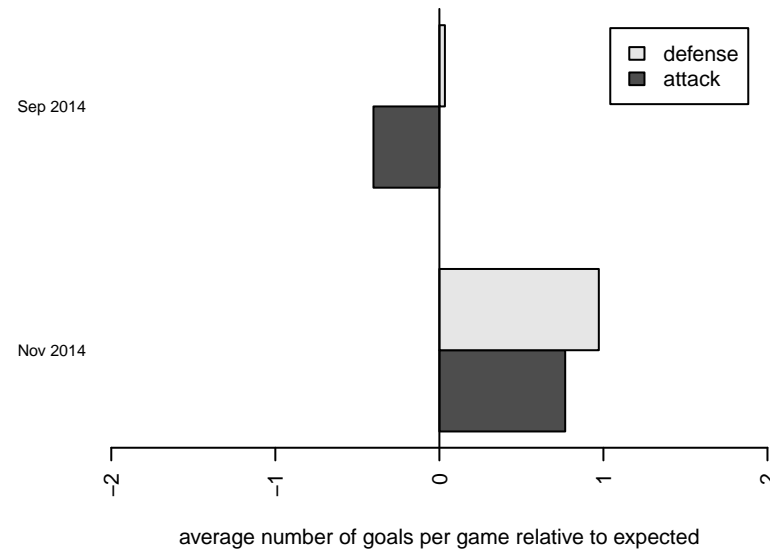
**attack and defense rating
relative to others at age
and all opponents in last 13 months**



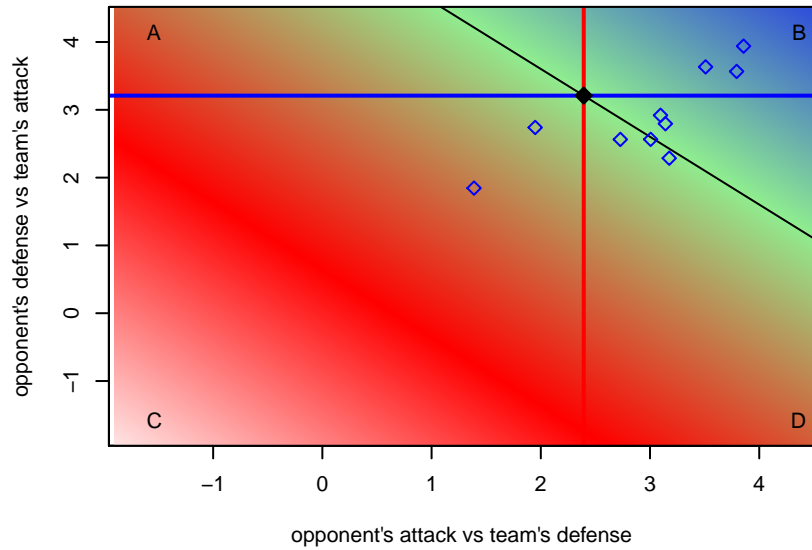
Performance relative to 13 month average



Performance relative to 13 month average



Distribution of opponents
 Red = Lose zone, Blue = Win zone, Green = Even
 Black line separates win/lose zones



lot. A=Neither has attack advantage, B=Opponent has both attack and defense advantage, C=Opponent has both attack and defense disadvantage, D=Both have

date	home		away		venue	pred.home	pred.away
2015-03-29	Santa Rosa United ECNL G00	0	De Anza Force ECNL G00	5	2014 ECNL U14	0.38	4.05
2015-03-28	Pleasanton Rage ECNL G00	5	De Anza Force ECNL G00	1	2014 ECNL U14	1.53	2.72
2014-11-16	Texas Rush ECNL G00	4	De Anza Force ECNL G00	3	2014 ECNL U14	1.70	1.19
2014-11-15	De Anza Force ECNL G00	1	Solar Chelsea SC ECNL G00	1	2014 ECNL U14	0.44	3.94
2014-11-14	De Anza Force ECNL G00	0	San Diego Surf ECNL G00	2	2014 ECNL U14	0.56	3.49
2014-11-09	San Juan SC ECNL G00	1	De Anza Force ECNL G00	2	2014 ECNL U14	2.76	0.74
2014-10-12	De Anza Force ECNL G00	1	San Juan SC ECNL G00	4	2014 ECNL U14	0.74	2.76
2014-10-05	De Anza Force ECNL G00	1	Mustang SC ECNL G00	1	2014 ECNL U14	1.53	1.29
2014-09-27	De Anza Force ECNL G00	3	MVLA ECNL G00	0	2014 ECNL U14	1.51	0.67
2014-09-21	Real Colorado G00	2	De Anza Force ECNL G00	1	2014 ECNL U14	1.66	1.35
2014-09-20	Colorado Storm ECNL G00	3	De Anza Force ECNL G00	1	2014 ECNL U14	1.64	1.91
2014-09-14	MVLA ECNL G00	0	De Anza Force ECNL G00	0	2014 ECNL U14	0.67	1.51
2014-09-06	De Anza Force ECNL G00	2	Pleasanton Rage ECNL G00	1	2014 ECNL U14	2.72	1.53